

## Notice to Mariners No 12/25

### ARDERSIER PORT – Deployment of AtoN's

Mariners are reminded that Ardersier Port is being redeveloped into an Energy Transition Facility and remains closed to commercial and leisure traffic until the works are completed in the latter part of 2025.

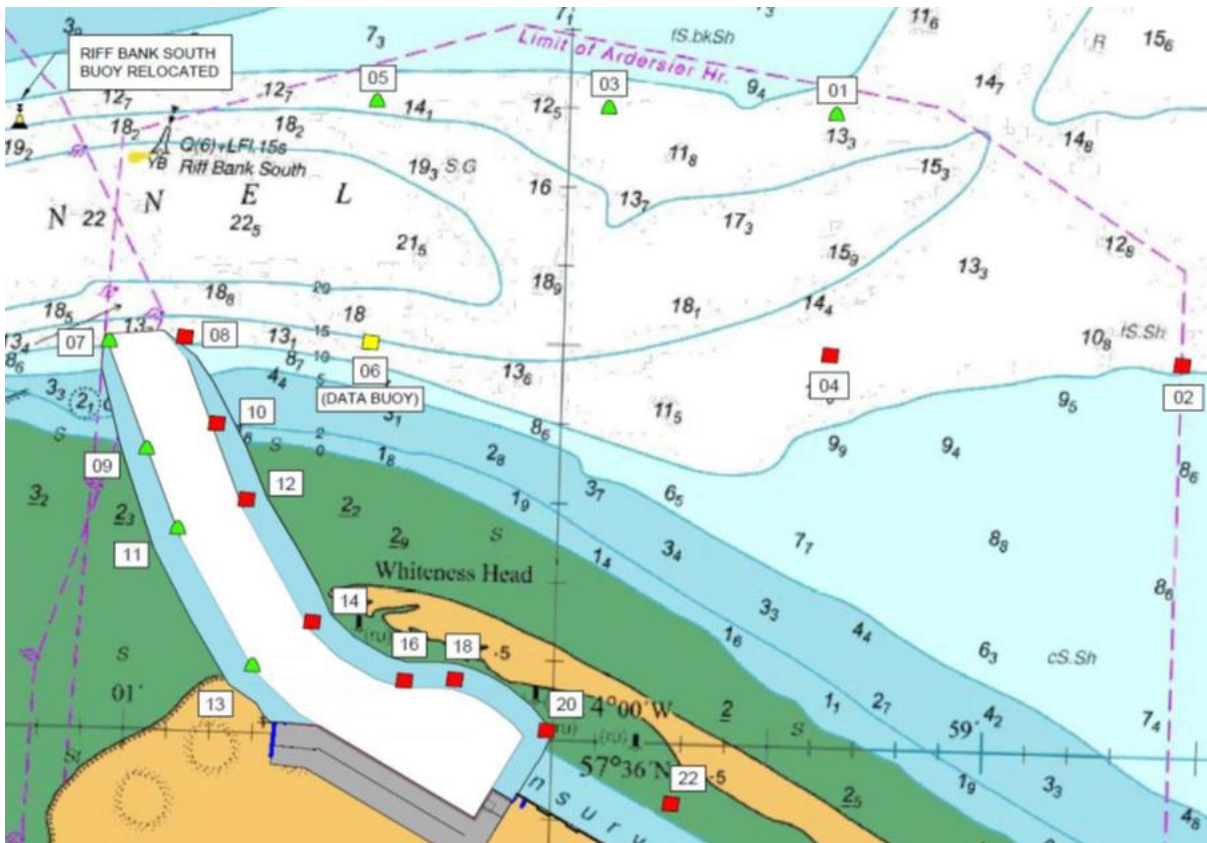
On the 4<sup>th</sup> August the permanent navigation buoys (Aids to Navigation) will be deployed, marking the safe navigational channel to/from Ardersier Port.

The name, position, type, colour, light characteristics and size are detailed below. Buoys no. 1 & 6 both have AIS.

BUOY #	LATITUDE	LONGITUDE	TYPE	DESCRIPTION	LIGHT CHARACTERISTIC	RANGE	DIMENSIONS
1	57 36.7948 N	003 59.3797 W	Buoy	Starboard Lateral Mark & Data	Green Fl 2s (LED 160 with GPS sync)	7NM	2.6m diameter, 4m focal plane
2	57 36.4888 N	003 58.5597 W	Buoy	Port Lateral Mark	Red Fl Q (LED 160 with GPS sync)	7NM	2.6m diameter, 4m focal plane
3	57 36.7948 N	003 59.9102 W	Buoy	Starboard Lateral Mark	Green Fl 4s (LED 160 with GPS sync)	5NM	2.4m diameter, 4m focal plane
4	57 36.4887 N	003 59.3797 W	Buoy	Port Lateral Mark	Red Fl 2s (LED 160 with GPS sync)	5NM	2.4m diameter, 4m focal plane
5	57 36.7948 N	004 00.4510 W	Buoy	Starboard Lateral Mark	Green Fl 6s (LED 160 with GPS sync)	5NM	2.4m diameter, 4m focal plane
6	57 36.4887 N	004 00.4510 W	Buoy	Special Mark & Data	Yellow Fl 5s		
RIFF BANK	57 36.7546 N	004 01.2817 W	NLB	Yellow over Black Horizontal Bands	Q(6) + LFI 15s		
7	57 36.4821 N	004 01.0578 W	Buoy	Starboard Lateral Mark	Green Fl VQ (LED 160 with GPS sync)	4NM	1.9m diameter, 3m focal plane
8	57 36.4887 N	004 00.8837 W	Buoy	Port Lateral Mark	Red Fl VQ (LED 160 with GPS sync)	4NM	1.9m diameter, 3m focal plane
9	57 36.3479 N	004 00.9628 W	Buoy	Starboard Lateral Mark	Green Fl 2s (M850 96E)	3NM	1.2m diameter, 1.8m focal plane
10	57 36.3808 N	004 00.8030 W	Buoy	Port Lateral Mark	Red Fl 2s (M850 96E)	3NM	1.2m diameter, 1.8m focal plane
11	57 36.2482 N	004 00.8850 W	Buoy	Starboard Lateral Mark	Green Fl 4s (M850 96E)	3NM	1.2m diameter, 1.8m focal plane
12	57 36.2857 N	004 00.7289 W	Buoy	Port Lateral Mark	Red Fl 4s (M850 96E)	3NM	1.2m diameter, 1.8m focal plane
13	57 36.0775 N	004 00.7025 W	Buoy	Starboard Lateral Mark	Green Fl 6s (M850 96E)	3NM	1.2m diameter, 1.8m focal plane
14	57 36.1335 N	004 00.5677 W	Buoy	Port Lateral Mark	Red Fl 6s (M850 96E)	3NM	1.2m diameter, 1.8m focal plane
16	57 36.0660 N	004 00.3485 W	Buoy	Port Lateral Mark	Red Fl 2s (M850 96E)	3NM	1.2m diameter, 1.8m focal plane
18	57 36.0662 N	004 00.2320 W	Buoy	Port Lateral Mark	Red Fl 4s (M850 96E)	3NM	1.2m diameter, 1.8m focal plane
20	57 36.0052 N	004 00.0148 W	Buoy	Port Lateral Mark	Red Fl Q (M850 96E)	2NM	1.2m diameter, 1.8m focal plane

The vessel 'Harris' will be deploying the AtoN's and shall be restricted in her ability to manoeuvre whilst deploying the buoys, all vessels are requested to give her a wide berth. Harris shall be listening on VHF ch.16 & 74. throughout.





Further information can be found on the Haventus website  
[www.haventus.com](http://www.haventus.com)

Capt. Donald MacKenzie  
 Harbour Master